

# BELTR T8



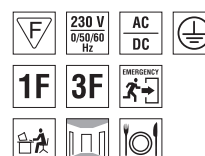
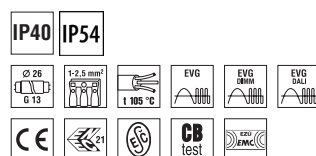
... indoor fluorescent light fitting.

## USE

The light fitting is suitable for offices, hallways, school interiors, libraries, lecture rooms, sanitary rooms, hospitals and passenger terminals.

## ADVANTAGES

- Light fitting protection **IP40,IP54**
- Diffuser: opalized polycarbonate (OP) or transparent polycarbonate (TR) = high mechanical resistance
- Up to 30 % lower electricity consumption in DALI, DIM version
- It can be delivered in dimmable or emergency version
- Possibility to through-wire individual light fittings to row with the use of external terminal blocks
- Certification: ESČ, ENEC, CB

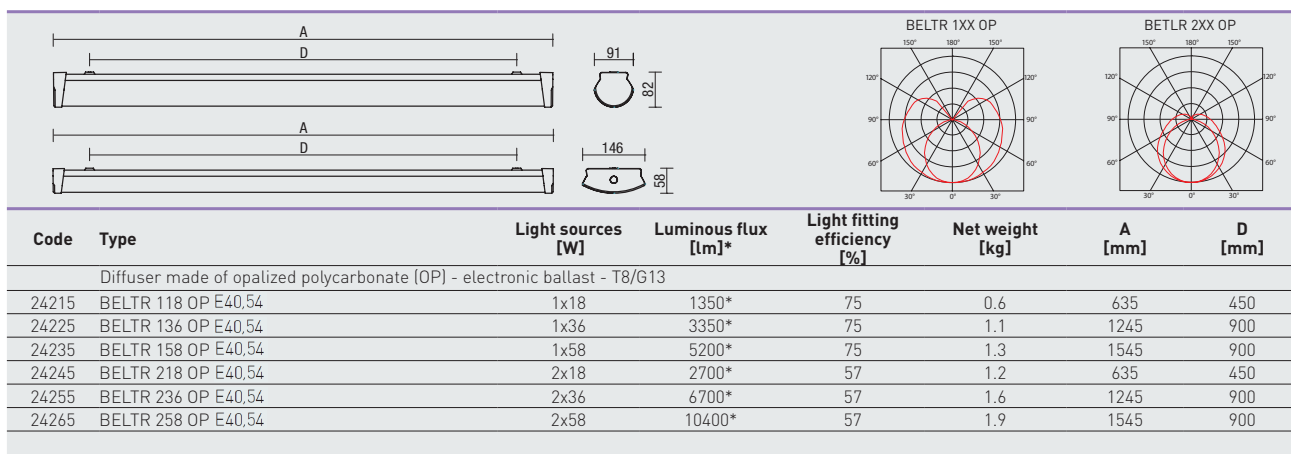


# BELTR T8 OP



## TECHNICAL DESCRIPTION

- Diffuser: opalized polycarbonate (OP), UV stable, impact-resistant
- Body (Reflector): steel sheet, white colour (RAL 9003)
- Cable gland: white, rubber
- Side covers: white, plastic (ABS)
- Terminal block: screwless, three-poles (basic version)
- Electric equipment: electronic ballast T8; T8 DALI or T8 DIM
- Light fitting protection: **IP40,IP54**



\* - total luminous flux of the light fitting with T8/840 sources at the temperature of 25 °C

## BELTR T8 OP E

Diffuser made of opalized polycarbonate (OP) - electronic ballast T8

Code	Type	1F	3F	M1h	M3h	3F M1h	3F M3h
24215	BELTR 118 OP E	x	x	x	x	x	x
24225	BELTR 136 OP E	x	x	24224	x	x	x
24235	BELTR 158 OP E	x	x	24234	x	x	x
24245	BELTR 218 OP E	x	x	x	x	x	x
24255	BELTR 236 OP E	24256	24286	24254	x	24284	x
24265	BELTR 258 OP E	24266	24296	24264	x	24294	x

## BELTR T8 OP DIM

Diffuser made of opalized polycarbonate (OP), electronic analogue dimmable ballast T8 DIM 1-10 V

Code	Type	1F	3F	M1h	M3h	3F M1h	3F M3h
24227	BELTR 136 OP ER DIM	x	x	24327	x	x	x
24237	BELTR 158 OP ER DIM	x	x	24337	x	x	x
24257	BELTR 236 OP ER DIM	24247	24287	24347	x	24367	x
24267	BELTR 258 OP ER DIM	24277	24297	24357	x	24377	x

## BELTR T8 OP DALI

Diffuser made of opalized polycarbonate (OP) - electronic digital dimmable ballast T8 DALI

Code	Type	1F	3F	M1h	M3h	3F M1h	3F M3h
24228	BELTR 136 OP ER DALI	x	x	24328	x	x	x
24238	BELTR 158 OP ER DALI	x	x	24338	x	x	x
24258	BELTR 236 OP ER DALI	24248	24288	24348	x	24368	x
24268	BELTR 258 OP ER DALI	24278	24298	24358	x	24378	x

## BELTR T8 OP S3F

Diffuser made of opalized polycarbonate (OP), through-wiring with the use of external terminal blocks Wieland (S) GST15i5

Code	Type	M1h	ER DIM	ER DIM M1h	ER DALI	ER DALI M1h
24346	BELTR 218 OP S3F E	x	x	x	x	x
24356	BELTR 236 OP S3F E	24384	24387	x	24388	x
24366	BELTR 258 OP S3F E	24394	24397	x	24398	x

Example of type marking: 24397 = BELTR 258 OP S3F ER DIM

**MADE-TO-ORDER VERSION**

\* we can also deliver made-to-order light fittings equipped with back-up source for emergency (non-maintained) illumination

**BELTR T8 OP NM1h**

Diffuser made of opalized polycarbonate (OP),  
emergency back-up source - 1 hour for emergency (non-maintained) illumination

**BELTR T8 OP NM3h**

Diffuser made of opalized polycarbonate (OP),  
emergency back-up source - 3 hours for emergency (non-maintained) illumination, plastic clips

**LEGEND**

**E** – electronic ballast

**ER DALI** – version with electronic digital dimmable ballast controlled by DALI protocol

**ER DIM** – version with electronic analogue dimmable ballast 1-10 V

**1F** – 1 phase wiring cables for through-wiring

**3F** – 3 phase wiring cables for through-wiring

**S3F** – external terminal block Wieland, 3 phase wiring cables for through-wiring

**M1h** – emergency back-up source with operating time of 1 hour (SA) for both permanent and emergency illumination

**M3h** – emergency back-up source with operating time of 3 hours (SA) for both permanent and emergency illumination

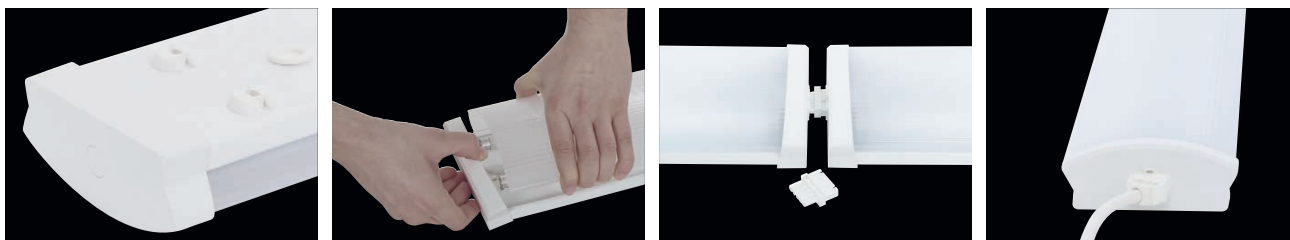
**NM1h** – emergency back-up source with operating time of 1 hour (SE) for emergency (non-maintained) illumination

**NM3h** – emergency back-up source with operating time of 3 hours (SE) for emergency (non-maintained) illumination

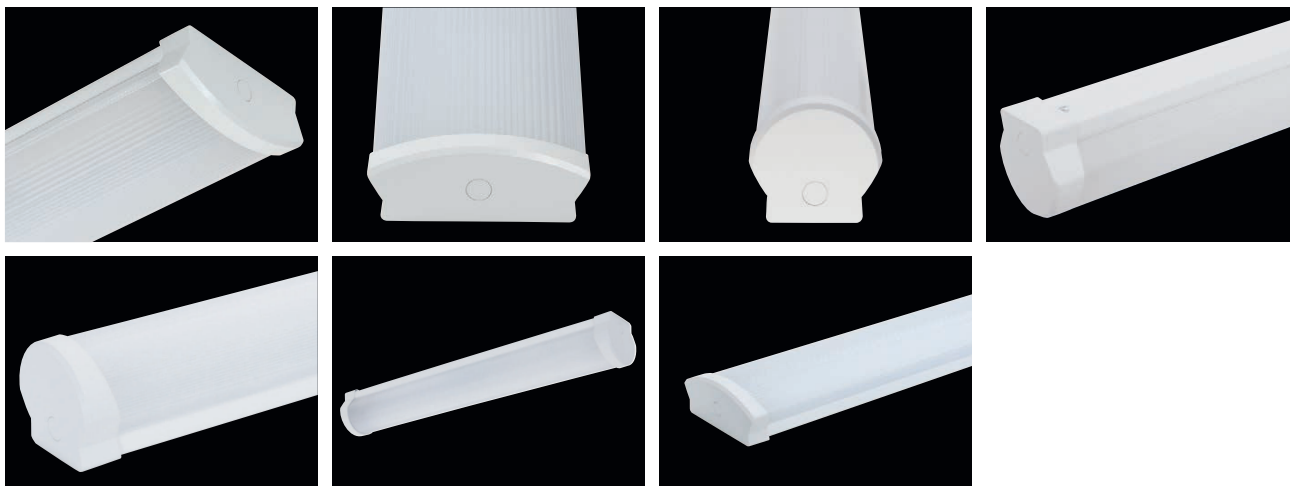
Batteries must be formatted before their putting into operation. Assembly instructions must be observed at installation.

**LIGHT FITTING ATTACHMENT**

Directly to a ceiling or a wall with the use of screws

**LIGHT FITTING DETAILED VIEW**

BELTR T8 OP

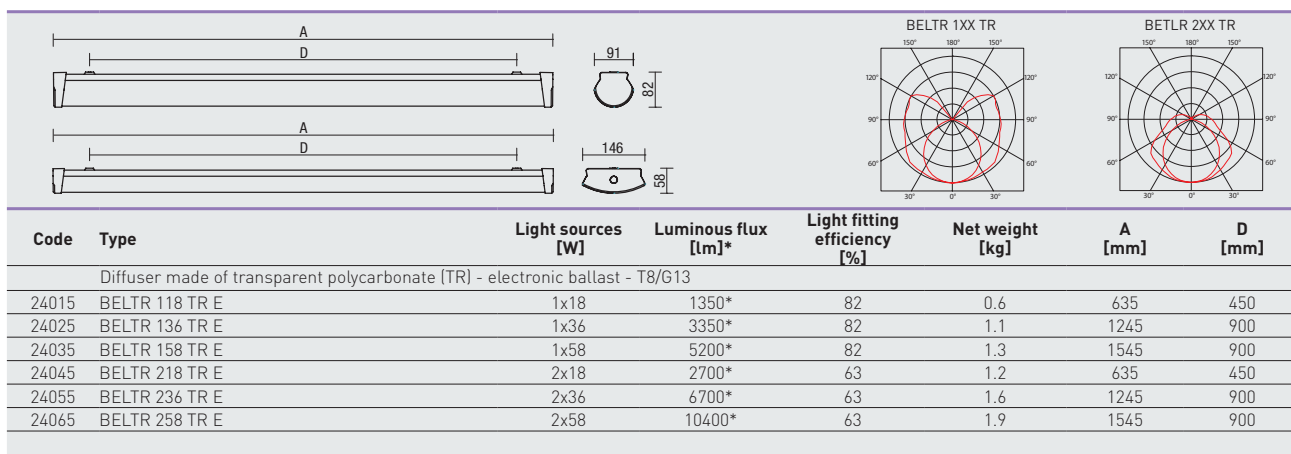


# BELTR T8 TR



## TECHNICAL DESCRIPTION

- Diffuser: transparent polycarbonate (TR), UV stable, impact-resistant
- Body (Reflector): steel sheet, white colour (RAL 9003)
- Cable gland: white, rubber
- Side covers: white, plastic (ABS)
- Terminal block: screwless, three-poles (basic version)
- Electric equipment: electronic ballast T8; T8 DALI or T8 DIM
- Light fitting protection: **IP40,IP54**



\* - total luminous flux of the light fitting with T8/840 sources at the temperature of 25 °C

## BELTR T8 TR E

Diffuser made of transparent polycarbonate (TR), electronic ballast T8

Code	Type	1F	3F	M1h	M3h	3F M1h	3F M3h
24015	BELTR 118 TR E	x	x	x	x	x	x
24025	BELTR 136 TR E	x	x	24024	x	x	x
24035	BELTR 158 TR E	x	x	24034	x	x	x
24045	BELTR 218 TR E	x	x	x	x	x	x
24055	BELTR 236 TR E	24056	24086	24054	x	24084	x
24065	BELTR 258 TR E	24066	24096	24064	x	24094	x

## BELTR T8 TR DIM

Diffuser made of transparent polycarbonate (TR), electronic analogue dimmable ballast T8 DIM 1-10 V

Code	Type	1F	3F	M1h	M3h	3F M1h	3F M3h
24027	BELTR 136 TR ER DIM	x	x	24127	x	x	x
24037	BELTR 158 TR ER DIM	x	x	24137	x	x	x
24057	BELTR 236 TR ER DIM	24047	24087	24147	x	24167	x
24067	BELTR 258 TR ER DIM	24077	24097	24157	x	24177	x

## BELTR T8 TR DALI

Diffuser made of transparent polycarbonate (TR), electronic digital dimmable ballast T8 DALI

Code	Type	1F	3F	M1h	M3h	3F M1h	3F M3h
24028	BELTR 136 TR ER DALI	x	x	24128	x	x	x
24038	BELTR 158 TR ER DALI	x	x	24138	x	x	x
24058	BELTR 236 TR ER DALI	24048	24088	24148	x	24168	x
24068	BELTR 258 TR ER DALI	24078	24098	24158	x	24178	x

## BELTR T8 TR S3F

Diffuser made of transparent polycarbonate (TR), through-wiring with the use of external terminal blocks Wieland (S) GST15i5

Code	Type	M1h	ER DIM	ER DIM M1h	ER DALI	ER DALI M1h
24146	BELTR 218 TR S3F E	x	x	x	x	x
24156	BELTR 236 TR S3F E	24184	24187	x	24188	x
24166	BELTR 258 TR S3F E	24194	24197	x	24198	x

Example of type marking: 24197 = BELTR 258 TR S3F **ER DIM**

**MADE-TO-ORDER VERSION**

\* we can also deliver made-to-order light fittings equipped with back-up source for emergency (non-maintained) illumination

**BELTR T8 TR NM1h**

Diffuser made of transparent polycarbonate (TR),  
emergency back-up source - 1 hour for emergency (non-maintained) illumination

**BELTR T8 TR NM3h**

Diffuser made of transparent polycarbonate (TR),  
emergency back-up source - 3 hours for emergency (non-maintained) illumination, plastic clips

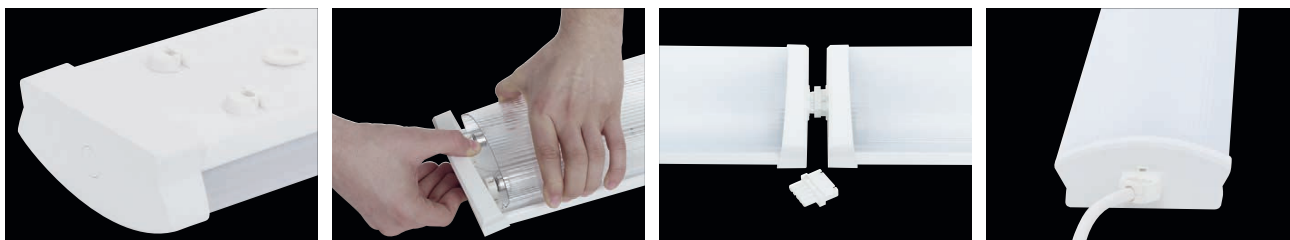
**LEGEND**

- E** - electronic ballast
- ER DALI** - version with electronic digital dimmable ballast controlled by DALI protocol
- ER DIM** - version with electronic analogue dimmable ballast 1-10 V
- 1F** - 1 phase wiring cables for through-wiring
- 3F** - 3 phase wiring cables for through-wiring
- S3F** - external terminal block Wieland, 3 phase wiring cables for through-wiring

- M1h** - emergency back-up source with operating time of 1 hour (SA) for both permanent and emergency illumination
  - M3h** - emergency back-up source with operating time of 3 hours (SA) for both permanent and emergency illumination
  - NM1h** - emergency back-up source with operating time of 1 hour (SE) for emergency (non-maintained) illumination
  - NM3h** - emergency back-up source with operating time of 3 hours (SE) for emergency (non-maintained) illumination
- Batteries must be formatted before their putting into operation. Assembly instructions must be observed at installation.

**LIGHT FITTING ATTACHMENT**

Directly to a ceiling or a wall with the use of screws



**LIGHT FITTING DETAILED VIEW**

BELTR T8 TR

